



2025-2026 Annual Report

An overview of our services, programs and finances.



AUTISMYUKON.ORG

Table of Contents

Our Board and Staff.....	3
President’s Report.....	4
Executive Director’s Report	6
What Kept Us Busy This Year	8

Reports from our Staff and Programs

Community Navigator - Sydney	10
Community Navigator - Zoé	12

Looking Ahead	14
----------------------------	----

Our Funders, and Key Partners and Collaborators	15
--	----

2025-2026 Financial Reports

Income Statement	18
Balance Sheet	19

Our Board and Staff

Board Members

- Katie Swales (**President**)
- Caroline Robitaille (**Vice-President**)
- Colleen Madore (**Secretary**)
- Camille Luks (**Treasurer**)
- Stefanie Richardson (**Director at Large**)
- Alexandria Lutz (**Director at Large**)

Staff and Contractors

- **Executive Director**, Rebecca Fenton
- **Community Navigator**, Sydney Born
- **Community Navigator**, Zoé Ouimette (since January 2026)
- **Bookkeeper**, Diane Stewart (since January 2026)
- **Administrative Assistant**, Sarah Macklon (until April 2026)
- **Sensory Room Coordinator and Community Navigator**, Carlie Graef (until September 2025)
- **PEERS Program**, Karen Rach, SLP
- **Bookkeeper**, Lisa Snyder (until December 31st, 2025)

IN MEMORY OF:

In January 2026, we sadly and unexpectedly lost our Bookkeeper, Lisa Snyder. Lisa had been supporting the financial aspects of the organization for many years. Not only did we lose a dedicated bookkeeper and colleague, but a friend and long time supporter of the work that we do.

We continue to try to understand and complete all the tasks that Lisa did and frequently wish we could ask her a question! We are appreciative of Diane Stewart who has taken on the role of looking after our accounting system and CRA reporting.



President's Report - Katie Swales



Another year has passed in the blink of an eye. Although I haven't looked back on previous annual reports recently it seems like I write the same thing for this reflection.

As I consider the last year it occurs to me that I have noticed a definite shift within our greater community - specifically a greater public recognition for neurodivergence. Our Yukon Theatre now regularly offers sensory friendly movie times without our partnership. Boston Pizza offers sensory friendly seating for a more pleasant dining experience. Erik Nielsen Whitehorse International Airport has instituted the Hidden Disabilities Sunflower Program. And as I move myself through community space it seems that people in general have an increased awareness of autism and neurodivergence.

Institutions still have barriers to deal with. I imagine the many cogs of such a 'big machine' have a greater complexity to follow-through with ideal improvements. I am happy to know that there are good people within education, disability services, health and social services and the other departments and organizations that care. It is at least a Titanic sized ship to retrofit and the work continues.

A few specifics within our organization:

Funding: AIDE Canada is a large funding and national landscape that has been unstable for some time. In December we found out that the funding was placed on hold - the cross-Canada hubs were no longer being supported as the Public Health Agency of Canada (PHAC) negotiated whether funding to AIDE Canada would continue or not. This meant our own Hub had no funding and we were self-supporting one of our positions through last year's fundraising.

Staffing: I want to thank Carlie for her work over the past years and wish her well. Also, thanks to Sarah for her administrative work supporting the AIDE project, daily office support and of course the Annual Autism Yukon Auction.

Welcome to Zoe who joined us in January 2026 and is learning the ropes quickly. THANKS to Sydney for her always welcoming, positive demeanor and breadth of ability through her years of work in the autism community both in BC and now Yukon.

Although not "staff" Lisa Snyder was our book-keeper, our all things finance helper and a friend. Sadly we lost her at the end of January to illness. As they say, we often don't know what we'll lose until it's gone. Lisa has left a hole in my heart both in terms of our organization and life. She is missed.

President's Report Continued...

Fund-Raiser: I want to acknowledge the gargantuan volunteer efforts of Karen Macklon, who created the Autism Yukon Auction and has yearly refined the operations like a finely tuned machine. The funds raised with Karen's efforts along with the generosity of donors and bidders allowed us to get through the last part of the year after losing AIDE funding.

Board and Rebecca: Camille, Caroline, Colleen, Stefanie along with myself come together throughout the year to support Rebecca in her role as Executive Director. I feel fortunate to have real life experience from these strong and knowledgeable women. Our discussions of philosophical and practical happenings in the present and considerations for the future ground me in confidence as we navigate through the years. Thanks to you all.

Executive Director's Report- Rebecca Fenton



Well again I am finding it hard to believe that I am writing another annual report! Time sure does fly!

I would like to thank the current Autism Yukon staff and those who left us during the year for their hard work, dedication to our services and the community, and their flexibility in scheduling appointment times that meet the needs of the community. I continue to be amazed when I complete my monthly reports for the Board of Directors at how much our small but mighty team accomplishes!

Thank you also to the Autism Yukon Board of Directors, particularly President Katie Swales for their support of the organization, staff and myself. A special thank you to Karen Macklon for the tremendous number of volunteer hours that she devotes to our annual online auction. And a special thank you as well to Terry Hauff, from Yukon Search and Rescue, who continues to support and guide us in our offering of the Project Lifesaver Program.

I would also like to thank the Yukon community for their generous support during our annual online auction (raising over \$17,000!) and donations throughout the year; and for their continued trust in our programs and services, and participation in our community events. Thank-you to ATCO Yukon for their generous donation this year. And last, but definitely not least, thank you to our funders: Yukon Government (Health and Social Services) and AIDE Canada.

The 25-26 year brought a change to our staff composition. In September 2025, Carlie Graef, our Sensory Room Coordinator and Community Navigator resigned to pursue other employment. In January, Zoé Ouimette joined our team as a Community Navigator and is able to offer services in English, French and Spanish.

Throughout this fiscal year we continued to be as responsive as possible to the requests that came to us given our budget and staff complement. Our in-house resource lending library continued to have steady use throughout the year. We also continued to promote the AIDE Canada lending library in order to provide more information on many different subjects. Our Sensory room was booked 5 or 6 days a week with several appointments each day. Interest in Project Lifesaver continued to be small but steady and we supported search training in Dawson City. The community now has the equipment and training necessary to conduct a search for anyone lost in the Dawson City area. We attempted to deliver a PEERS Social Skills Program but despite many people asking for the program only two registered. Launch into Life was mainly offered on an individual basis as part of our community navigation services. We offered two CARES Caregiver Support groups to those caring for a child or an adult with autism, other neurodivergence or disability.

Executive Director's Report Continued...

Requests for Community Navigation continued at a very steady busy pace throughout the year. Most navigation appointments happened within a week of the request, and we were able to accommodate the many drop-in visits and respond to phone/email inquiries promptly. Requests for information about and funding for adult diagnosis in particular were ongoing throughout the year.

As the AIDE Canada Northern Hub, we organized and delivered two webinars - "Eating on the Spectrum Part 2" (May 2025) and "Autism Diagnosis in the Yukon" (March 2026). We continued to be responsible until December 31st, 2025 for reviewing and researching services across Canada that are currently acknowledged on the AIDE Canada asset map or are presently missing, and providing those corrections to AIDE Canada for inputting. We also monitored the AIDE Canada national chatline for two hours each work day. Our funding agreement with AIDE Canada ended in December 2025.

We were very happy this year to offer a number of Community Events to our members. The community was also welcomed into our office in December for a Christmas drop-in. We partnered with several other agencies to offer more events for families and the community and were also proud to have a presence at many community events over the year. We continue to enjoy working with partners and each year brings new and exciting partnerships.

Requests for education workshops, trainings and support were received throughout the year. We were also pleased to participate in several projects regarding sensory-friendly spaces and materials.

In our office space we continued to make an accessible washroom with adult changing table available to the community and also installed dimmable lighting in our main office space for a more comfortable sensory experience.

We maintained a consistent presence on social media throughout the year posting our own post and sharing those from partner organizations.

Our presence continues to be requested to sit on various committees and groups throughout the Yukon and across Canada; and to provide information and support in making spaces and programs in the community more neuro-inclusive and accessible.

What kept us busy this year....

Statistics

296 Sensory Room Appointments
20 Sensory Room Orientations
42 Formal Community/Family Navigation Appointments
Over 275 Inquiries/Drop-Ins from the Public and other Organizations

Workshops/Webinars/Trainings Autism Yukon Presented

May Eating on the Spectrum Part 2 (Presenter Bethany Rooker) with AIDE Canada
June Presentation to Yukon U STEAM camp staff
July Presentation to YG H&SS Transitional Services
Aug Project Lifesaver Presentation at Normandy Living
Sept Presentation about our Services to YG Family Resource Unit staff/Followed by Sensory Room Orientation in Oct.
Nov Training for L'Association Franco-Yukonnaise Staff
Nov Visit from and discussion with Skookum Jim Friendship Centre CPNP Program
Feb Training for YFNED Education Advocates
Feb Presentation on Services at PCS Yukon Event - Reducing Health Inequalities - Gender Identities
Mar Autism Diagnosis in the Yukon Webinar with AIDE Canada support

Groups/Programs we Offered

April/May CARES Caregiver Support Program
All Year Project Lifesaver

Attempted to Run PEERS group but lack of participants caused cancellation.



Autism Yukon Community Events

April Gym Event at Ecole Emilie Tremblay
July Self-Advocate Trivia Night
Aug Self-Advocate Trivia Night
Oct Self-Advocate Halloween Trivia Night
Dec Christmas Open House
Jan Nakai Theatre Sun Room

Neuro-inclusion Support

Air North Airport Day (Nov)
CYFN Family Meeting Space
Elections Canada
Hidden Disabilities Sunflower
Inclusion Yukon
Table de la petite enfance
Whitehorse Public Library (sensory Kits)

Significant Collaborative Work

National Autism Network

Partenariat Communauté en Santé - PCS Yukon - Several projects throughout year

Whitehorse Community Safety and Well-Being Plan

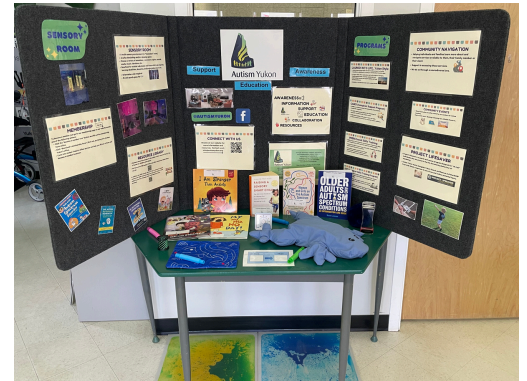
Autistic Social Gathering (held monthly starting in the Fall, in our space with staff support)



What kept us busy this year cont'd....

Events We Participated In

May	CYFN Wellness Fair
May	Pre-Kindergarten Health Fair
Jun	CDC Family Event
July	VFWC Kitchen Days
Aug	Fridays in the Park
Aug	CYFN Wellness Fair
Sept	VFWC CPNP Program Baby Lunch
Oct	Elderactive Fair
Oct	CPNP Program at Les Essentielles
Dec	Tobogganing Fridays
Dec	Family Literacy Centre Family Event
Feb	Family Literacy Centre - Orientation to Services with Families
Mar	CDC Kindergarten Connections Event



Trainings/Workshops/Webinars/Conferences Attended

Apr	Autism Alliance of Canada Leadership Summit
Apr	Decolonizing Autism Webinar
Jun	Enhancing Disability Inclusive Disaster Risk Communication
Aug	An Advocacy Journey: A Caregiver's Perspective
Oct	Financial Security and Abuse Prevention Webinar
Feb	PEERS Young Adult Training (Zoé) - 3 days

Large Scale Projects we Participated In

Other Projects we Supported

EA/TOC Training Project (Dept of Educ.)
Centering Learners in Assessment Practices
(Dept of Educ.)

B.C. Children's Sibling Peer Group

Committees/Regular Meetings

AIDE Asset Map Meetings
AIDE Hub Coordinator Meetings
Advisory Committee for Yukon Education (ACYE)
CST National Meetings
Diagnostic Advisory Committee
Family Resource Unit Advisory Committee
Provincial/Territorial Autism Network
RISE Subcommittee (Reimagining Inclusive Special Education)

From the Desk of Our Community Navigator- Sydney Born

In my role as a Community Navigator, I help people access information, connect with local programs and services, and navigate different systems in the Yukon. Whether it's a family member, caregiver, or self-advocate, my goal is to help reduce stress, offer encouragement, and contribute to a more informed, understanding, and inclusive community. I provide support in both English and French, which has expanded the reach of our navigation services.



Key Activities

Held over 35 formal community navigation meetings with self-advocates, families, and local businesses looking to increase their understanding and support efforts, and/or seek supports for themselves or a loved one. Formal navigation refers to in-person meetings. This does not include support provided over email, phone calls, virtual communication, or informal drop-in conversations. When all supports are included, I have easily supported over 100 navigation cases in the Yukon, with a handful being in French as well.

A significant portion of community navigation also occurs through informal drop-in support, which is not always formally set up. These interactions highlight the importance of accessible, low-barrier supports for individuals seeking timely information and guidance. In response to this identified need, Autism Yukon has begun developing drop-in program to improve accessibility and ensure more consistent access to support outside of scheduled appointments. This will be coming later in 2026.

As a whole, our organization responded to many inquiries covering topics such as:

- The diagnostic process and first steps
- Understanding autism and neurodiversity
- Community supports and resources available for families or individuals
- Available programs and activities in the Yukon
- Advocacy in classrooms and workplaces
- Sensory supports – teaching “what is sensory?”, sharing sensory supports, referring to spaces/tools
- Autism Yukon’s services and programs
- General awareness and understanding of autism

In addition to direct navigation support, I have also supported individuals and families in advocating for accommodations in school, workplace, and community settings. This has included assisting with identifying needs, understanding accommodation processes, and supporting communication with relevant systems and service providers.

Sensory Room

I have also provided sensory room orientations to families and community organizations. This includes introducing Autism Yukon’s Snoezelen room, explaining the purpose of the sensory space, and supporting individuals in understanding how to adapt and use the space based on individual sensory needs.

Workshops / Community Training

Over the past year, I have organized, participated in, and delivered workshops and presentations aimed at increasing understanding of autism, neurodiversity, and inclusive supports across the Yukon. These included:

- Yukon University STEAM Camp training (June 2025) – “Adaptation for Fun and Success”
- Yukon First Nation Education Directorate (February 2026) – “Support and Connection”
- Family Resource Unit (September 2026) – “Supporting Autistic Individuals and Families + What is Autism Yukon?”
- L’Association franco-yukonnaise (AFY) staff training – “Neurodiversity in the Workplace”
- Yukon Government Transition group-home staff training

Programs / Groups

In the Fall of 2025, we issued a call for participants for a PEERS Social Skills Group for young adults aged 18–25 with Karen Rach, SLP. While the group has been well received in the past, we were unable to proceed due to insufficient interest this time. This highlighted the reality that group-based programs can be limiting due to the diverse needs and schedules of families and individual’s. Autism Yukon continues to advocate for flexible programming, including:

- Shortened versions of longer multi-week programs
- 1:1 option for those unable to attend group sessions
- Zoom options for those living outside Whitehorse
- Maintaining free and accessible services

Autism Yukon also began collaborating with a passionate self-advocate who created the Autistic Social Gatherings in Whitehorse. I connected with her, and Autism Yukon has been lucky enough to host this group for the past 8 months. The group has been well received and continues to grow, with participants also becoming more familiar with Autism Yukon’s services. Through this group, over 10 new adult self-advocates have connected with Autism Yukon and learned about our services and programs.

In September, Rebecca and I co-facilitated CARES: Empowering the Caregiver. The group was well received by participants from different parts of the Yukon. We supported caregivers by teaching self-care practices using evidence-based techniques. This group will be offered again in the upcoming year.

Moving Forward

As always, I have immense gratitude for being able to be in this role at Autism Yukon. This role and community continue to teach me so much and truly help me grow as an individual. Thank you to all of the families, self-advocates, and partner organizations for another great year of collaborating and connecting.

From the Desk of Zoé Ouimette, Community Navigator



In my role as the second Community Navigator at Autism Yukon, I support individuals, families, and community members in navigating services, programs, and systems across the Yukon. I help people understand available supports, connect them to appropriate resources, and reduce barriers to accessing services related to employment, family supports, diagnostics, and community programming. I provide support in English, French, and Spanish, which increases accessibility for a diverse range of community members. A key part of my role is building and maintaining relationships with community partners to support more coordinated and accessible services. My responsibilities also include sensory room support, where I help create welcoming spaces for regulation and engagement. I also support internal administrative tasks under the direction of the Executive Director.

Key Activities (January-March 2026): Between January and March 2026, I completed approximately over 40 documented interactions across community engagement, partnership development, sensory room support, administrative coordination, and direct client support. This period reflects my transition from onboarding into more active community-facing navigation work.

January (Onboarding & System Learning): January focused on onboarding and learning Yukon service systems. I completed several interactions focused on onboarding and service mapping. Key meetings included Wendy McIntyre-Cowx (YG Disability Services, Core Funder), Valerie Dykshoorn (Employment Support Program), Amanda Bonnycastle and Vanessa Norris (Child Development Centre), Lila Nickel and Ysabelle Perreault (YG Family Resource Unit), Rebecca Dacko-Brink (Teegatha'Oh Zheh), Lisa Moore (Family Literacy Centre) and Stephanie Hammond (LDAY Centre for Learning). The focus was understanding service pathways and inter-agency coordination. I also participated in a PCS Yukon engagement session with Sydney, including providing service introduction and sensory room awareness.

February (Community Engagement & Applied Practice): February focused on community engagement and applied learning. I completed 10 interactions with increased community-facing work. I supported families in the sensory room on multiple occasions. I also developed partnerships with CMHA Yukon, Les Essentielles, Yukon Climbing Gym, Meadow Lakes Golf Club, and Titanium Storage. I co-delivered a full-day YFNED workshop with Sydney, with approximately 20 participants. I participated in UCLA PEERS® for Young Adults training from February 18-20. I also attended the CDC Kindergarten Fair on February 24 with Sarah, where we engaged with over 10 families. The focus was outreach, education, and strengthening community connections.

March (Direct Support & Coordination): March focused on direct client support and coordination. I completed 13 interactions involving direct service support and follow-up. I supported employment-related tasks such as resumes and cover letters. I responded to inquiries related to diagnostics, service animals, and employment supports. I coordinated sensory room access and orientation sessions. I also supported ongoing coordination with Elections Canada and PCS Yukon, along with scheduling, follow-ups, and internal coordination tasks.

Reflection: This reporting period shows clear progression in my role. January focused on learning systems and building relationships. February focused on applying knowledge through community engagement. March focused on direct support and coordination. Overall, this period strengthened my understanding of how Yukon Autism services connect and how Community Navigation reduces barriers and improves access. I look forward to continuing to strengthen partnerships, expand community engagement, and support more accessible and coordinated services across the Yukon.



Looking Ahead



We anticipate that the 26-27 fiscal year will be one of more growth and change, as we continue to meet the ever-increasing requests for our programs and services. We are very appreciative of an increase in our funding this year which will provide us with the ability to meet service demand, pay our bills and provide staff with some health benefits. Our funding from AIDE Canada ended in December 31st, 2025, so we are particularly grateful for increased support from the Yukon Government.

We have been provided some YG funding for the next two fiscal years to support adult autism assessments. We are just in the process of determining how that will work and ensuring that we have a complete list of Registered Psychologists able to do those assessments. We anticipate this will be in demand and want to get it right!

Large scale projects in the next fiscal year will include:

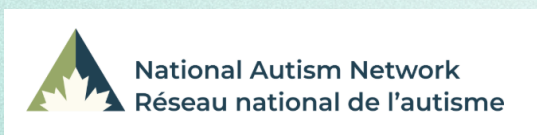
- Coordinating and attending the National Autism Network Yukon Consultation Event to explore the five key National Autism Strategy pillars:
 - screening, diagnosis and services
 - economic inclusion
 - data collection, public health surveillance, and research
 - public awareness, understanding, and acceptance
 - tools and resources
- Developing information booklets to support navigation.
- Developing a more accessible organization website.

The Yukon Network on Disability (formerly YIAND) was re-established again and we are looking forward to continued collaboration and partnership with the other organizations in this group.

We will be hosting some drop-in events for teens, young adults and adults starting in June 2026. We also have some exciting new partnerships coming up this year and are excited to see where those go.

At Autism Yukon we will continue to provide all of our current programs and services, and be responsive to new requests. We look forward to having a continued presence at community events and to serving the Yukon population.

Our Funders, and Key Partners and Collaborators



Thank you for your continued support and collaboration!

FINANCIAL DOCUMENTS
April 1st, 2025 to March 31st, 2026
**(these statements are currently undergoing financial
compilation by a CPA)**

NOTES REGARDING FINANCIAL STATEMENTS

AIDE Canada funding - \$64,800 was funding for the period from April 1st, 2025 to December 31st, 2025. The remaining \$22,000 in funding for the 2024-2025 fiscal year was expended in that year but arrived in our account in April 2026 and thus appears as income in the fiscal year being covered in this annual report.

Core Yukon Government Funding - The final payment for the 25-26 fiscal year came in in April 2026 and thus will appear as income in the 2026-2027 fiscal year.

**Autism Yukon
Income Statement Apr 01, 2025 to Mar 31, 2026**

REVENUE

REVENUE

YTG Funding	166,492.62
AIDE Canada funding	86,800.00
Interest Earned	770.66
Participant Fees	4,335.00
Membership Fees	402.30
Fundraising	18,883.05
Donations	21,581.08
Other income	223.40

TOTAL REVENUE 299,488.11

TOTAL REVENUE 299,488.11

EXPENSE

EXPENSES

Advertising & Marketing	618.85
Bank Charges & Interest	681.13
Insurance	7,061.52
Memberships/Licenses/Dues	580.71
Office Expense	208.90
Maintenance	4,071.51
Professional Development	906.58
Program Materials	1,939.92
Property Taxes	1,614.76
Rent	39,462.50
Sub-Contractor	4,880.00
Supplies	1,141.64
Telephone/Fax/Internet	6,835.26
IT	1,230.00
Travel	2,671.75
Utilities	6,930.78
Wages & Benefits	227,224.12
Wellness Benefits	6,369.06
CPP Expense	12,049.92
EI Expense	4,679.29
WCB Expense	1,271.54

Total Wages & Benefits 251,593.93

TOTAL EXPENSES 332,429.74

TOTAL EXPENSE 332,429.74

NET INCOME -32,941.63

**Autism Yukon
Balance Sheet As at Mar 31, 2026**

ASSET

CURRENT ASSETS

Cash on Hand	80,668.10
Petty Cash	600.00
Savings	50,826.67
Bank of Montreal	-17,360.54
Accounts Receivable	2,005.50
GST Receivable	4,273.40
Prepaid Expenses & Deposits	3,759.50

TOTAL CURRENT ASSETS 124,772.63

TOTAL ASSET 124,772.63

LIABILITY

CURRENT LIABILITIES

Accounts Payable	7,458.44
Accrued Liabilities	16,511.74
Vacation Payable	8,276.78
CPP Payable	18,182.29
EI Payable	6,453.48
Income Tax Payable	17,911.92
Receiver General Payable	<u>42,547.69</u>

TOTAL CURRENT LIABILITIES 74,794.65

TOTAL LIABILITY 74,794.65

EQUITY

CONTRIBUTED SURPLUS

Accumulated Surplus	82,919.61
Current Earnings	-32,941.63

TOTAL CONTRIBUTED SURPL... 49,977.98

TOTAL EQUITY 49,977.98

LIABILITIES AND EQUITY 124,772.63